

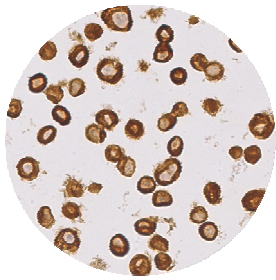
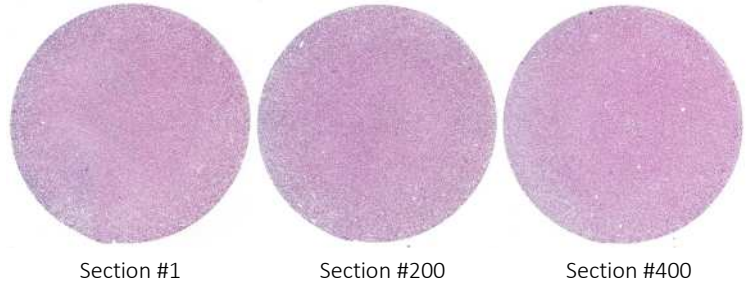


## CellMax™ FFPE Cell Pellet Slide - The Ultimate Control for IHC and ISH

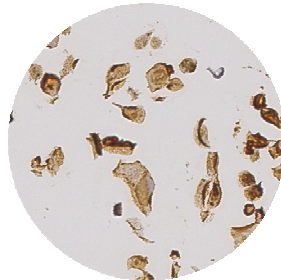
FFPE cell pellets are commonly used as controls in immunohistochemical (IHC) and *in situ* hybridization (ISH) applications. AbboMax aims to provide cell pellet slides to researches and laboratories with **AFFORDABILITY, QUALITY, and CONSISTENCY**. The CellMax™ FFPE cell pellets are prepared using a patent-pending processes that generates highly homogenous FFPE blocks with any cell density (up to 90% area coverage). Both morphology and biological molecules, including protein and nucleic acid (DNA and RNA) targets are very well preserved for IHC and ISH analysis.

### Consistency and Uniformity

The CellMax™ cell pellets are produced using a patent-pending process, which generates highly consistent density and homogeneity across the entire cell pellet block.



CK7 Ab – SKBR3 Cells  
Harvested by Trypsinization



CK7 Ab – SKBR3 Cells  
Harvested by Trypsin-Free Method

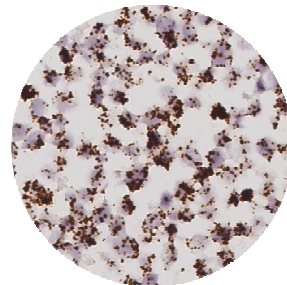
### Immunohistochemistry (IHC)

The CellMax™ slides are perfect controls for Immunohistochemical (IHC) applications. Cells can be harvested by standard trypsinization or a proprietary trypsin-free method to best preserve cell surface antigens while inflicting minimal physical damage that leads to loss of biomarkers.

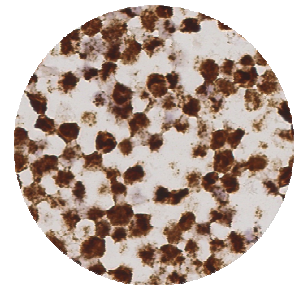
### DNA/RNA *In situ* Hybridization (ISH)

Nucleic acids (DNA/RNA) are perfectly preserved in the CellMax™ cell pellets and are ready for DNA and RNA *in situ* hybridization (ISH) analysis.

\*RNAscope® is an RNA *in situ* hybridization technology developed by Advanced Cell Diagnostics, Inc. (Hayward, CA)



HeLa - PORN2A (low-copy gene)  
RNA-ISH by RNAscope®\*



HeLa – HPV18 E6E7  
RNA-ISH by RNAscope®

### Standard Preparation (Custom cell lines and preparations available)

Fixation:	10% Neutral Buffered Formalin for 24 hours at room temperature (15-25°C)
Embedding:	Paraffin
Section Thickness:	5µm
Stability	> 5 yr



## CellMax™ FFPE Cell Pellet Slides - Catalog

Cell Line	Catalog Number	Cell Line	Catalog Number	Cell Line	Catalog Number
<b>Breast Cancer</b>		<b>Prostate Cancer</b>		<b>Ovarian Cancer</b>	
SKBR3	T210101	PC3	T210401	OVCAR-8	T210801
MCF7	T210102	DU-145	T210402	IGR-OV1	T210802
MDA-MB-231	T210103	<b>Colon Cancer</b>		<b>Renal Cancer</b>	
MDA-MB-468	T210104	SW-620	T210501	SN-12C	T210901
BT474	T210105	HT-29	T210502	TK-10	T210902
T-47D	T210106	HCC-2998	T210503	<b>Liver Cancer</b>	
<b>Lung Cancer</b>		<b>Melanoma</b>		HepG2	T211001
H2228	T210201	SK-MEL-2	T210601	Huh-7	T211002
H23	T210202	SK-MEL-5	T210602	<b>Custom FFPE Cell Line Blocks and Sections</b>	
A549	T210203	M14	T210603	Custom Cell Lines and Pellets	T71001
H460	T210204	M21	T210604	<b>Multi-Cell Line Arrays</b>	
HOP-62	T210205	CHL-1	T210605	Custom Multi-Cell Line Arrays	T71001
H322	T210206	<b>Leukemia</b>			
<b>Cervical Cancer</b>		K-562	T210701		
HeLa	T210301	Jurkat	T210702		
CaSki	T210302	Raji	T210703		

Price: \$8/slide

OEM Price: Inquire

## FFPE Mouse Tissue Slides - Catalog

Tissue	Catalog Number	Tissue	Catalog Number	Tissue	Catalog Number
Brain (coronal)	T219001	Intestine (Ileum)	T219007	Mouse Multi-tissue FFPE section (Brain, Colon, Heart, Intestine, Kidney, Liver, Lung, Spleen)	T219101
Brain (Sagittal)	T219002	Kidney	T219008		
Colon	T219003	Liver	T219009		
Heart	T219004	Lymph Node	T219010		
Intestine (Duodenum)	T219005	Lung	T219011		
Intestine (Jejunum)	T219006	Pancreas	T219012		
		Stomach	T219013		
		Spleen	T219014		

Genetic Background: BALB/c  
 Age: 8-10 weeks  
 Fixation: 10% Neutral Buffered Formalin for 24 hours at room temperature (15-25°C)  
 Embedding: Paraffin  
 Section Thickness: 5µm

Price: \$7/slide – single slide

\$13/slide – multi-tissue slide

OEM Price: Inquire